

SpringBoard Application CD

Thank you for purchasing the SpringBoard™ Application CD. This software allows you to emulate the SpringBoard communication device on any Windows®-based computer. The full SpringBoard Operator Manual is available on this CD in PDF format. If you do not have Adobe® Acrobat® Reader® you can install from this CD.


Using this application, you will be able to create vocabulary sets that you can then save in MTI (Memory Transfer Interface) format. Such files can be loaded into an actual SpringBoard device. You can also open an MTI file that has been created on a SpringBoard and edit it.

This means you can develop and modify your client's SpringBoard device vocabulary without needing to have the device present.

Saving memory (an MTI file) to your computer

1. Select the "Option" menu and choose "Go to Toolbox," or simply press F9 when the SpringBoard Application window is active.
2. Press the TRANSFER MEMORY MENU key.



3. Select the  button to save a single User Area.
4. From the "Select the User Area to Save" screen, choose the User Area that you wish to save.
5. Using the navigation window that pops open, go to the drive/open the folder where you want to save the memory.
6. Type in a new file name for the device, making sure it ends with .MTI (e.g. MYFILE.MTI) and then hit the "Save" button.
7. When the transfer is finished, you will see a yellow box with "Memory Transfer Complete" in it. Press the "OK" key to finish.

Loading an MTI file from the computer

1. Select the "Option" menu and choose "Go to Toolbox," or simply press F9 when the SpringBoard Application window is active.
2. Press the TRANSFER MEMORY MENU key.



3. Select the button to load a single User Area.
4. From the "Select the Area to Load Into" screen, choose the User Area into which you wish to load the vocabulary.
5. Using the navigation window that pops open, go to the drive/open the folder where the MTI file you wish to load is located, highlight the file, then select "Open."
6. When the transfer is finished, you will see a yellow box with "Memory Transfer Complete" in it. Press the "OK" key to finish. The file is now loaded into your chosen User Area.

Saving and/or Loading the ENTIRE device contents

If you want to save ALL the User Areas as one file, choose



Similar, to load a file containing all the User Areas, choose



Remember that a file like this will be much larger than a single User Area file.

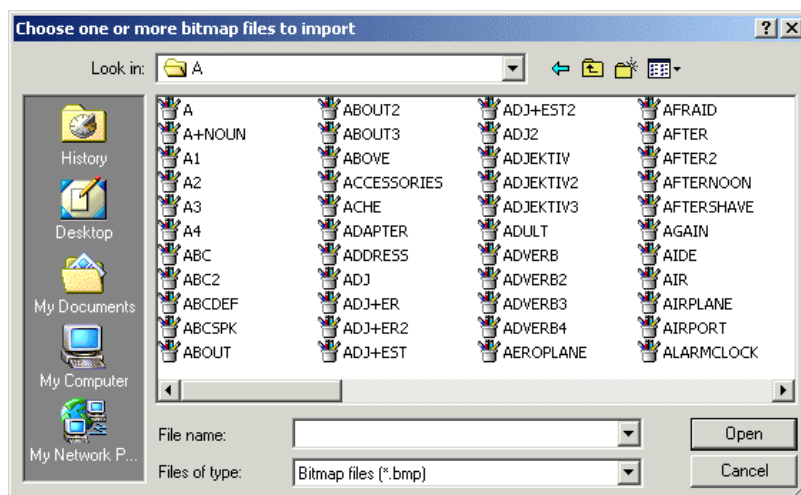
Loading an Icon from the Computer

The SpringBoard can accept a graphics file that is (a) BMP format and (b) 256 colors. If your target picture is NOT in this format, you will need to use a graphics program to convert it. You also need to have a Windows-based computer running the PRC “Memory Transfer Interface” program.

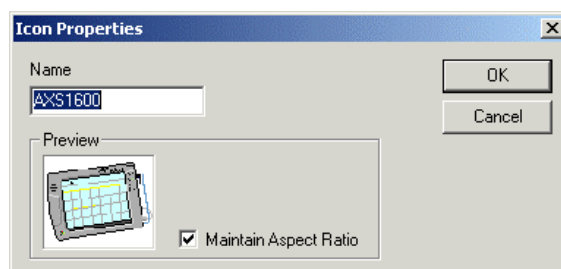
1. Select the “Option” menu and choose “Go to Toolbox,” or simply press F9 when the SpringBoard Application window is active.
2. Press the TRANSFER MEMORY MENU key.



3. Select the button.
4. The “Choose one or more bitmap files to import” window opens.



5. Navigate using the “Look in:” drop down menu to select the icon(s) you want, then hit the “Open” key.
6. Provided the file is a 256 color BMP file, a new window opens that gives you the opportunity to name/rename the icon. If you choose a name already used, the new icon will NOT be imported.



7. Click "OK" when you are satisfied with the name (limited to 8 characters). This completes the importing process.

A note about loading MTI files created by this software into a SpringBoard

If you imported many icons into your SpringBoard Application software, but only use a few of them to design a specific User Area, only those used will be saved when you use "Save One User Area" – the unused ones do not get transferred to the SpringBoard.

If you want to include ALL your imported icons in an MTI file, you need to do a "Save Entire Device Contents" option. This will take longer to load into the SpringBoard than a single User Area but all your imports go across.

If you use PCS symbols to develop vocabulary in your SpringBoard Application software, you can ONLY transfer the MTI file to a SpringBoard that has PCS symbols enabled. If you do not have a PCS-activated SpringBoard, contact PRC Sales on 1-800-262-1933 for the details about how to do this and the cost involved.

Loading Sound Files (.wav) from the Computer

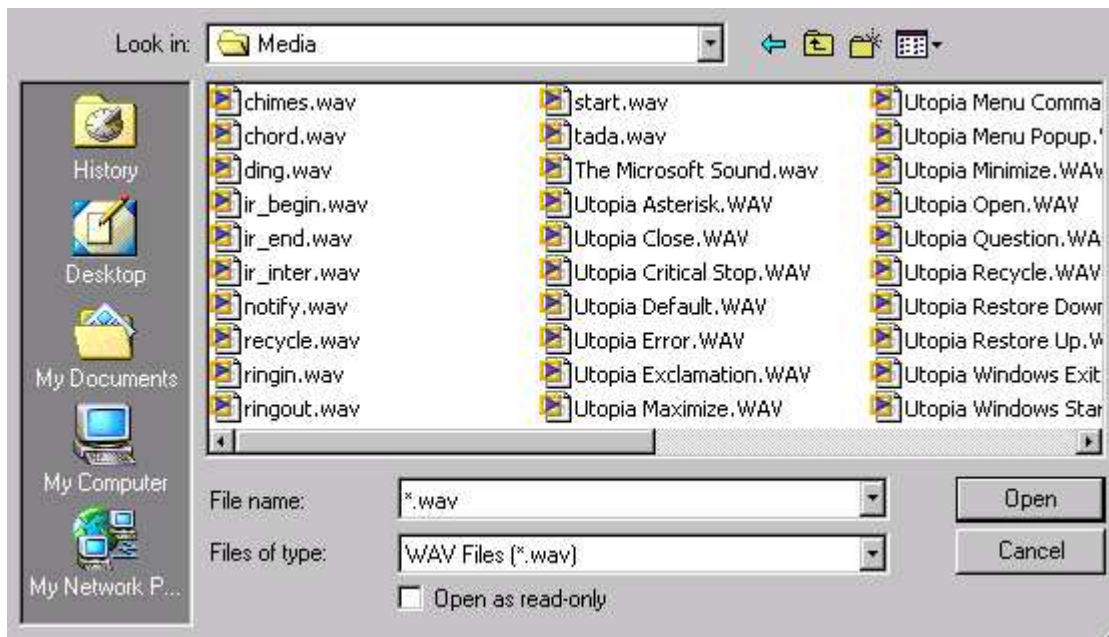
1. Select the "Option" menu and choose "Go to Toolbox," or simply press F9 when the SpringBoard Application window is active.
2. In the Toolbox, press the STORE CORE key.
3. On your overlay, activate the icon or icon sequence you want to store the .wav file under.

4. Press the "Import Sound File" key.



5. Select a .wav file to import, then select "Open."

Sample of .wav files already available in the Windows folder on the computer



6. Select "OK" on your display screen.
7. Go to your Overlay and select the icon or icon sequence where you stored the .wav file. You should hear the sound you stored.

Acknowledgments

SpringBoard and Memory Transfer Interface are trademarks of the Prentke Romich Company. Picture Communication Symbols (PCS) are copyright Mayer-Johnson Inc. and used with permission. Windows is a registered trademark of Microsoft Inc. Adobe, Acrobat, and Reader are registered trademarks of Adobe Systems Incorporated.